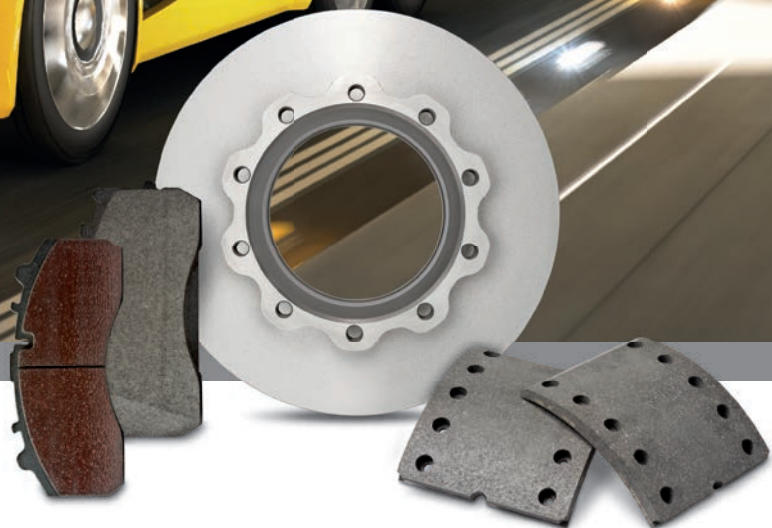




**TEXTAR**<sup>®</sup>  
BRAKE TECHNOLOGY



## **Current O.E. homologations for commercial vehicles**

*Aktuelle O.E. Freigaben für Nutzfahrzeuge*

*Homologations O.E. actuelles pour véhicules utilitaires*

*Homologaciones de O.E. para vehículos industriales*

*Homologações actuais O.E. para veículos comerciais*

[www.textar.com](http://www.textar.com)



Textar is TMD Friction's leading brand for commercial vehicle friction solutions. Be it for truck, trailer, bus or coach – Textar offers an optimum material for every application and is fitted by leading brake and vehicle manufacturers worldwide.

70% of Europe's commercial vehicles fitted with linings are originally equipped with Textar. In the rapidly growing segment of disc brakes for commercial vehicles Textar is the leading O.E. supplier and at the forefront of disc brake technology.



Textar ist die weltweit führende Marke für Nutzfahrzeug-Bremsbeläge. Egal ob Truck, Anhänger, Stadt-oder Reisebus – Textar bietet für jede Anwendung die perfekte Lösung. Kein Wunder also, dass Textar einer der anerkanntesten Erstausrüster der internationalen Bremsen-und Fahrzeugindustrie ist.

70 % aller mit Trommelbremsbelägen ausgerüsteten Nutzfahrzeuge in Europa bremsen mit Textar. Und nicht nur hier hat Textar die Nase vorn: Auch im schnell wachsenden Markt für Nutzfahrzeug-Scheibenbremsbeläge sind wir nicht nur Technologie-sondern auch Marktführer.



Textar est depuis toujours la marque freinage numéro un au sein du groupe TMD Friction. Pour toutes applications en camions, remorques, cars urbains ou de tourisme, Textar représente la solution optimale. Pour cette raison, Textar se pose en marque référence dans l'industrie automobile et des systèmes de freinage.

Aujourd'hui, 70% des véhicules utilitaires avec freins à tambour sont équipés d'origine de garnitures Textar. De même, pour les plaquettes de frein, Textar est leader du marché grâce à une technologie reconnue.



Textar es la marca líder en productos de fricción para frenos para vehículos industriales del grupo TMD Friction. Ya se trate de camiones, remolques, autobuses urbanos o autocares, Textar dispone de la solución óptima para cada aplicación. Sus productos son escogidos por los principales fabricantes de vehículos y de sistemas de frenos de todo el mundo.

Un 70% de todos los vehículos industriales equipados con forros para frenos de tambor montan los forros de frenos Textar. También en el segmento de rápido crecimiento de pastillas de freno para vehículos industriales, Textar no es sólo líder en tecnología sino también en el mercado.



No portfólio do grupo TMD Friction a Textar é a marca líder em pastilhas de travões para veículos comerciais. Independentemente de se tratar de veículos pesados, atrelados, autocarros de cidade ou longo curso – a Textar oferece a solução ideal para cada aplicação. Isto torna a Textar num fabricante de equipamento original reconhecido da indústria de travões e indústria automóvel internacional.

Uns impressionantes 70% de todos os veículos comerciais equipados com pastilhas de travões de tambor estão equipados com calços Textar. Também na área de mercado de rápido crescimento das pastilhas de travões de disco para veículos comerciais, a Textar não é apenas líder na tecnologia mas também líder de mercado.



additional axle	Zusatzachse	essieu supplémentaire	eje adicional	eixo adicional
all-wheel drive + dump truck	Allradantrieb + Muldenkipper	traction intégrale + camion benne basculante	tracción total + camión bañera	tracção integral + camião lixeira
article no.	Artikel-Nr.	référence	referencia	artigo n°
brake	Bremse	frein	freno	travão
brake disc	Bremsscheibe	freins à disque	disco de freno	disco de travão
bus	Bus	bus	autobús	autocarro
corporation bus with MAN chassis	Stadtbus mit MAN-Fahrgestell	bus urbain avec châssis MAN	autobús con chasis MAN	autocarro citadino com chassis MAN
front axle	Front axle	essieu avant	eje delantero	eixo dianteiro
intercity bus with MAN chassis	Überlandbus mit MAN-Fahrgestell	autocars avec châssis MAN	autocar con chasis MAN	autocarro intercity com chassis MAN
key lining	Schlüsselbelag	garniture avec encoche pour TU	forro clave	calço principal
lifting axle	Liftachse	essieu relevable	eje elevador	eixo elevador
model	Model	modèle	modelo	modelo
new	neu	nouveau	nuevo	novo
oversize of	Übergröße von	surdimension pour	sobremedida de	sobredimensão de
rear axle	Rear axle	essieu arrière	eje trasero	eixo traseiro
series/line	Serie	série	serie	serie
single tyres	Einfachbereifung	essieu 2 roues	neumáticos individuales	pneus simples
South America	Südamerika	Amérique du Sud	Sudamérica	América do Sul
transporter/bus (T4)	Transporter/Bus (T4)	camionette/bus (T4)	furgoneta/autobús (T4)	furgoneta/autocarro (T4)
truck	LKW	camion	camión	camião
year (year built)	Baujahr	année	año de fabricación	ano de fabricação







## VEHICLE MANUFACTURER/FAHRZEUGHERSTELLER

Model/Modell	Year/ Baujahr	Front Axle/ Vorderachse	Art-Nr.	Rear Axle/ Hinterachse	Art-Nr.
<b>Ernst Auwärter (Bus)</b>					
Mini-Mic Bus	1993-	29055 220 0 4 T3010	2905503	29055 220 0 4 T3010	2905503
<b>BMC (Truck/LKW)</b>					
Wabco PAN 17		29285 260 3 4 T3016	2928503	29285 260 3 4 T3016	2928503
<b>CNHTC China National Heavy Duty Truck Corporation (China)</b>					
HOWO H7 CNHTC Z3 20"		29254 300 1 4 T8000	2925401		
CNHTC Z4 22.5"		29280 300 1 4 T8000		29280 300 1 4 T8000	
16"		29289 270 0 4 T8000			
<b>Csepel/Ungarn</b>					
Midi Bus	1993-	29055 220 0 4 T3010	2905503	29055 220 0 4 T3010	2905503
<b>DAF (Truck/LKW)</b>					
LF 45	2001-07/2014	29088 260 3 4 T3010	2908807	29088 260 3 4 T3010	2908807
LF 45	08/2014-	29285 260 3 4 T3010	2928502	29285 260 3 4 T3010	2928502
LF 55, 12-15 t	2001-2002	29141 298 1 4 T3010	2914106	29141 298 1 4 T3010	2914106
LF 55, 12-15 t	2003-08/2014	29159 298 2 4 T3010	2915901	29159 298 2 4 T3010	2915901
LF 55, 12-15 t	09/2014-	29313 298 2 4 T3010	2931301	29313 298 2 4 T3010	2931301
LF 55, 18 t	2001-10/2011	29202 300 1 4 T7400	2920201	29202 300 1 4 T7400	2920201
LF 55, 18 t	11/2011-	29278 300 1 4 T7400	2927802	29278 300 1 4 T7400	2927802
CF 65	2001-10/2011	29202 300 1 4 T7400	2920201	29202 300 1 4 T7400	2920201
CF 65	11/2011-	29278 300 1 4 T7400	2927802	29278 300 1 4 T7400	2927802
CF 75	2001-10/2011	29202 300 1 4 T7400	2920201	29202 300 1 4 T7400	2920201
CF 75	11/2011-	29278 300 1 4 T7400	2927802	29278 300 1 4 T7400	2927802
CF 85	2001-10/2011	29202 300 1 4 T7400	2920201	29202 300 1 4 T7400	2920201
CF 85	11/2011-	29278 300 1 4 T7400	2927802	29278 300 1 4 T7400	2927802
XF 95	2002-10/2011	29202 300 1 4 T7400	2920201	29202 300 1 4 T7400	2920201
XF 95	11/2011-	29278 300 1 4 T7400	2927802	29278 300 1 4 T7400	2927802
XF 105	2006-10/2011	29202 300 1 4 T7400	2920201	29202 300 1 4 T7400	2920201
XF 105	11/2011-	29278 300 1 4 T7400	2927802	29278 300 1 4 T7400	2927802
419x152,4				19024 2150 0 5 D7203/G203	1902401
419x203				19617 1850 0 5 D7203/G203	1961705
420x150				19010 2080 0 5 D7203/G203	1901001
420x150				19900 1910 0 5 D7203/G203	1990009
420x175				19052 2070 0 5 D7203/G203	1905201
420x200				19063 2070 0 5 D7203/G203	1906301
420x200				19890 1850 0 5 D7203/G203	1989007
420x240				19069 2080 0 5 D7203/G203	1906901

Model/Modell	Year/ Baujahr	Front Axle/ Vorderachse	Art-Nr.	Rear Axle/ Hinterachse	Art-Nr.
<b>Dongfeng/Yutong Bus (China)</b>					
410x180		17406 1700 0 8 T8600			
410x180				15704 1700 0 8 T8600	
410x220		19138 1680 0 8 T8600			
410x220				19139 1680 0 8 T8600	
400x155		17067 1700 0 8 T8600			
400x155				19086 1700 0 8 T8600	
<b>Dennis (Bus)</b>					
Enviro-Line	2001-08/2014	29159 298 2 4 T7400	<b>2915907</b>	29159 298 2 4 T7400	<b>2915907</b>
Enviro-Line	09/2014-	29313 298 2 4 T7400	<b>2931303</b>	29313 298 2 4 T7400	<b>2931303</b>
Enviro-Line		29285 260 3 4 T7400	<b>2928504</b>	29285 260 3 4 T7400	<b>2928504</b>
<b>HUAJIN (Truck/LKW) (China)</b>					
420x200		19094 1800 0 8 T090/ T013	<b>1909442</b>	19094 1800 0 8 T090/T013	<b>1909442</b>
420x180		19032 1800 0 8 T090/ T013	<b>1903234</b>	19032 1800 0 8 T090/T013	<b>1903234</b>
420x180		19636 1850 0 5 T090/ T013	<b>1963601</b>	19636 1850 0 5 T090/T013	<b>1963601</b>
420x218		19126 1850 0 5 T013		19126 1850 0 5 T013	
<b>HUALING (Truck/LKW) (China)</b>					
410x185				19246 1500 0 8 T8860	
<b>Ford (Truck/LKW)</b>					
Cargo	08/2012-	29174 292 2 4 T3032	<b>2917401</b>	29174 292 2 4 T3032	<b>2917401</b>
Cargo		19116 2100 0 5 D7151	<b>1911602</b>	19116 2100 0 5 D7151	<b>1911602</b>
Cargo		19071 1800 0 8 G115/ D7115	<b>1907109</b>	19071 1800 0 8 G115/D7115	<b>1907109</b>
<b>FOTON (Truck/LKW) (China)</b>					
YOUFIN DA06 20"		29288 300 0 4 T8050			
<b>GAZ Group (Truck/LKW)</b>					
Wabco PAN17		29285 260 3 4 T3032	<b>2928501</b>	29285 260 3 4 T3032	<b>2928501</b>
Knorr SB5		29183 340 2 5 T3030	<b>2918303</b>	29183 340 2 5 T3030	<b>2918303</b>
<b>Irisbus (Bus)</b>					
Meritor D-Elsa-2		29131 302 1 4 T3016	<b>2913105</b>	29131 302 1 4 T3016	<b>2913105</b>
414x220		19187 1850 0 8 T0115	<b>1918709</b>	19187 1850 0 8 T0115	<b>1918709</b>
<b>Isuzu (Truck/LKW)</b>					
Truck with Meritor Elsa 225-3		29174 292 2 4 T3032	<b>2917401</b>	29174 292 2 4 T3032	<b>2917401</b>
<b>Iveco</b>					
Daily Turbo 5,9 t	1992-	29001 200 0 5 T456	<b>2900102</b>	17096 1260 0 5 T017	<b>1709601</b>
Daily		29107 200 0 5 T456	<b>2910701</b>		
Z-Serie	1986-1991	29017 230 0 4 T456	<b>2901703</b>		
Eurocargo (Tector)	2000-07/2014	29088 260 3 4 T3016	<b>2908823</b>	29088 260 3 4 T3016	<b>2908823</b>



Model/Modell	Year/ Baujahr	Front Axle/ Vorderachse	Art-Nr.	Rear Axle/ Hinterachse	Art-Nr.
Eurocargo (Tector)	08/2014-	29285 260 3 4 T3016	2928503	29285 260 3 4 T3016	2828503
Eurocargo (Tector)		29095 300 3 4 T3030	2909522	29095 300 3 4 T3030	2909522
Eurocargo (Tector)		29320 300 1 4 T3030	2932005	29320 300 1 4 T3030	2932005
Eurostar		19714 2100 0 5 D7141	1971410	19714 2100 0 5 D7141	1971410
Eurostar		19091 2180 0 5 D7141	1909102	19091 2180 0 5 D7141	1909102
Eurostar		19716 2100 0 5 D7141	1971612	19716 2100 0 5 D7141	1971612
Eurostar		19553 2100 0 5 D7141	1955301	19553 2100 0 5 D7141	1955301
300x100	1986-1991			17096 1260 0 5 T017	1709601
410x180 (Eurotrakker)				19109 2100 0 5 D 7151	1910902
410x200 (Eurotrakker)				19116 2100 0 5 D 7151	1911602
325x120				17088 1260 0 5 T011	1708808
325x140				17688 1200 0 4 T011	1768801
325x100				17924 1200 0 4 D7141/T011	1792408
381x177,8				19384 1800 0 5 D7141/T022	1938414
410x200				19786 1780 0 8 D7141/T011	1978610
410x220				19824 1860 0 5 D7141/T011	1982410
315/316 (R81)	1981-1987	29688 250 0 8 T456	2968801		
315	1988-	29688 250 0 8 T456	2968801		
471/480	1984-	29016 280 0 5 T456	2901601		
<b>Kamaz (Truck/LKW)</b>					
4307/ 4308	2005-12/2013	29148 340 2 5 T3030	2914815	29148 340 2 5 T3030	2914815
4307/ 4308	01/2014-	29183 340 2 5 T3030	2918303	29183 340 2 5 T3030	2918303
<b>Kässbohrer (Evobus) Bus</b>					
Knorr Bremse K85	1989-	29747 320 0 8 T456	2974703		
S 315, 319 NF	1991-	29030 282 1 4 T7400	2903009	29278 300 1 4 T7400	2927802
410x160		19849 1755 0 5 T016	1984902		
410x220				19699 1755 0 5 T016	1969901
<b>MAN (Truck/LKW)</b>					
F-Serie		17238 1700 0 8 T020	1723806		
F-Serie		19713 1700 0 8 T020	1971301		
F-Serie		19495 1700 0 8 T020	1949511	19495 1700 0 8 T020	1949511
F-Serie				19496 1700 0 8 T020	1949611
G-Serie	-1987	15817 1200 0 5 T026	1581702	15817 1200 0 5 T026	1581702
L2000	1993-1996	29055 220 0 4 T3010	2905503		
L2000	1996-07/2014	29088 260 3 4 T3010	2908807		
L2000	08/2014-	29285 260 3 4 T3010	2928502		
L2000		29091 270 3 4 T3010 (Oversize from/ Übermaß von 29088)	2909104		

Model/Modell	Year/ Baujahr	Front Axle/ Vorderachse	Art-Nr.	Rear Axle/ Hinterachse	Art-Nr.
TGL	2005-06/2014	29148 340 2 5 T3029	2914811	29148 340 2 5 T3029	2914811
TGL	07/2014-	29183 340 2 5 T3029	2918301	29183 340 2 5 T3029	2918301
M-Serie		17682 1700 0 8 T020	1768202		
M-Serie		17238 1700 0 8 T020	1723806		
M-Serie		19713 1700 0 8 T020	1971301		
M-Serie		19495 1700 0 8 T020	1949511	19495 1700 0 8 T020	1949511
M-Serie			1949611	19496 1700 0 8 T020	1949611
M 2000 (12 t)	1996-07/2014	29088 260 3 4 T3010	2908807	29088 260 3 4 T3010	2908807
M 2000 (12 t)	08/2014-	29285 260 3 4 T3010	2928502	29285 260 3 4 T3010	2928502
M 2000 (12 t)		29091 270 3 4 T3010 (Oversize from/ Übermaß von 29088)	2909104	29091 270 3 4 T3010 (Oversize from/ Übermaß von 29088)	2909104
M 2000 (14 t)		29095 300 3 4 T3010	2909507		
M 2000 (14 t)		29320 300 1 4 T3010	2932001		
F2000	1994-	29113 282 1 4 T3010	2911303		
F2000		29114 302 1 4 T3010 (Oversize from/ Übermaß von 29113)	2911401		
F2000	1994-	19495 1700 0 8 T020	1949511	19495 1700 0 8 T020	1949511
F2000, (additional axle/Zusatzachse)	1994-			17238 1700 0 8 T020	1723806
F2000	1994-			19496 1700 0 8 T020	1949611
TGA	2000-2001	29113 282 1 4 T3010	2911303	29113 282 1 4 T3010	2911303
TGA		29114 302 1 4 T3010 (Oversize from / Übermaß von 29113)	2911401	29114 302 1 4 T3010 (Oversize from/ Übermaß von 29113)	2911401
TGA/TGX	2001-	29131 302 1 4 T3010	2913103	29131 302 1 4 T3010	2913103
410x143				17238 1700 0 8 T020	1723806
410x222				19581 1790 0 5 T020	1958101
410x163				19713 1700 0 8 T020	1971301
410x163				19579 1790 0 5 T020	1957901
<b>MAN (Bus)</b>					
SR 240/280	1975-	19713 1700 0 8 T020	1971301	19496 1700 0 8 T020	1949611
SÜ 240/280	1972-	19713 1700 0 8 T020	1971301	19496 1700 0 8 T020	1949611
SG 240/242	1986-1994	19579 1790 0 5 T020	1957901	19581 1790 0 5 T020	1958101
SL 200/202	1986-1994	19579 1790 0 5 T020	1957901	19581 1790 0 5 T020	1958101
Corporation bus/Stadtbuss	1986-1995	29113 282 1 4 T3023	2911307	29113 282 1 4 T3023	2911307
Corporation bus/Stadtbuss		29114 302 1 4 T3023 (Oversize from/ Übermaß von 29113)	2911402	29114 302 1 4 T3023 (Oversize from/ Übermaß von 29113)	2911402
FRH 422 Lion`s Star	1994-	29113 282 1 4 T3010	2911303		
FRH 422 Lion`s Star		29114 302 1 4 T3010 (Oversize from/ Übermaß von 29113)	2911401		
<b>MCI Motor Coach Industries (Bus) (USA)</b>					
Meritor EX 225-3		29187 310 1 4 T7400	2918701	29187 310 1 4 T7400	2918701
<b>Menarini (Bus)</b>					
U 210/I 210/I 330	1980-	29016 280 0 5 T456	2901602		
<b>Mercedes-Benz (Truck/LKW)</b>					
TN	1977-1995			11019 0780 0 5 T017	1101901
TN	1977-1995			13020 0780 0 5 T017	1302001





Model/Modell	Year/ Baujahr	Front Axle/ Vorderachse	Art-Nr.	Rear Axle/ Hinterachse	Art-Nr.
Sprinter 408, 411, 412, 413, 414, 416	04/03-	29153 200 1 4 T3011	2915302	29153 200 1 4 T3011	2915302
Sprinter (NCV 3) > 3,5 t	2006-	29192 209 1 4 T3036	2919201		
Sprinter (NCV 3) 5,0 t	2008-	29200 209 2 4 T3036	2920002	29217 206 1 5 T3038	2921702
Vito/Viano	04/2009-	29192 209 1 4 T3036	2919201		
LN 1	1986-			15030 0800 0 5 T017	1503002
LN 1	1986-			15059 0950 0 5 T017	1505901
Atego 7-12 t	1998-	29183 340 2 5 T3016	2918302	29183 340 2 5 T3016	2918302
Atego 12-16 t		29095 300 3 4 T3016	2909504	29095 300 3 4 T3016	2909504
Atego 12-16 t		29361 300 3 4 T3016	2936101	29361 300 3 4 T3016	2936101
Atego	1998-	19494 1700 0 8 T012	1949407		
MK (BM 652-655)	1989-	17682 1700 0 8 T012	1768202	17682 1700 0 8 T012	1768202
MK (BM 652-655)	1989-	17238 1700 0 8 T012	1723802	17238 1700 0 8 T012	1723802
MK (BM 652-655)	1989-	19494 1700 0 8 T012	1949407	19494 1700 0 8 T012	1949407
MK (BM 652-655)	1989-	19495 1700 0 8 T012	1949507	19495 1700 0 8 T012	1949507
MK (BM 652-655)	1989-			19496 1700 0 8 T012	1949607
SK Serie (BM 656-)	1989-	19494 1700 0 8 T012	1949407	19494 1700 0 8 T012	1949407
SK Serie (BM 656-)	1989-	19495 1700 0 8 T012	1949507	19495 1700 0 8 T012	1949507
SK Serie (BM 656-)	1989-			19496 1700 0 8 T012	1949607
Actros	1996-	19495 1700 0 8 T012		19496 1700 0 8 T012	1949607
Econic	1998-	29087 300 1 4 T7400	2908711	29087 300 1 4 T7400	2908711
Econic		29278 300 1 4 T7400	2927802	29278 300 1 4 T7400	2927802
South America/Süd Amerika (Wabco PAN 17)		29117 260 0 4 T3010	2911701	29117 260 0 4 T3010	2911701
410x220		19699 1755 0 5 T016	1969901	19699 1755 0 5 T016	1969901
<b>Mercedes-Benz (Bus)</b>					
O 303 9R-12R	1974-1992	17795 1797 0 5 T016	1779501	19706 1797 0 5 T016	1970603
O 303 13R-15R	1974-1992	19706 1797 0 5 T016	1970603	19707 1797 0 5 T016	1970705
O 305	1969-1987	19706 1797 0 5 T016	1970603	19707 1797 0 5 T016	1970705
O 307	1973-1987	19706 1797 0 5 T016	1970603	19707 1797 0 5 T016	1970705
O 405	1984-	19706 1797 0 5 D 7113	1970612	19707 1797 0 5 D 7113	1970714
O 408	1991-	19706 1797 0 5 D 7113	1970612	19707 1797 0 5 D 7113	1970714
Cito, Citaro	1998-	29087 300 1 4 T7400	2908711	29087 300 1 4 T7400	2908711
Cito, Citaro		29278 300 1 4 T7400	2927802	29278 300 1 4 T7400	2927802
Tourino	2003-	29095 300 3 4 T7400	2909518	29095 300 3 4 T7400	2909518
Tourino		29361 300 1 4 T7400	2936102	29361 300 1 4 T7400	2936102
<b>Mercedes-Benz Unimog</b>					
U 400/U 500	2003-	29134 230 1 4 T202	2913401	29134 230 1 4 T202	2913401
U 1000/U 1300	1978-	29581 150 0 4 T205	2958104	29581 150 0 4 T205	2958104
U 1500/U 1700	1978-	29764 203 0 5 T527	2976402	29765 203 0 4 T527	2976502



Model/Modell	Year/ Baujahr	Front Axle/ Vorderachse	Art-Nr.	Rear Axle/ Hinterachse	Art-Nr.
<b>Neoplan (Bus)</b>					
Knorr Bremse	1988-	29747 320 0 8 T456	<b>2974703</b>		
<b>Optare (Bus)</b>					
Solo	2002-07/2014	29088 260 3 4 T7400	<b>2908824</b>	29088 260 3 4 T7400	<b>2908824</b>
Solo	08/2014-	29285 260 3 4 T7400	<b>2928504</b>	29285 260 3 4 T7400	<b>2928504</b>
Meritor EX 225-3		29187 310 1 4 T7400	<b>2918701</b>	29187 310 1 4 T7400	<b>2918701</b>
<b>Perlini (Truck/LKW)</b>					
121-27		29626 258 0 4 T457	<b>2962603</b>	29626 258 0 4 T457	<b>2962603</b>
131-30		29626 258 0 4 T457	<b>2962603</b>	29626 258 0 4 T457	<b>2962603</b>
131-33		29626 258 0 4 T457	<b>2962603</b>	29626 258 0 4 T457	<b>2962603</b>
DP 366 C		29025 340 0 8 T263	<b>2902501</b>	29025 340 0 8 T263	<b>2902501</b>
DP 655 C		29025 340 0 8 T263	<b>2902501</b>	29025 340 0 8 T263	<b>2902501</b>
<b>Prevost (Bus)</b>					
Knorr SB 7000		29087 300 1 4 T7400	<b>2908711</b>	29087 300 1 4 T7400	<b>2908711</b>
Knorr SB 7000		29278 300 1 4 T7400	<b>2927802</b>	29087 300 1 4 T7400	<b>2927802</b>
<b>Renault Truck (Truck/LKW)</b>					
Midliner	1998-2000	29100 252 0 4 T3016	<b>2910004</b>		
Midlum 17,5"	2000-07/2014	29088 260 3 4 T3016	<b>2908823</b>	29088 260 3 4 T3016	<b>2908823</b>
Midlum 17,5"	08/2014-	29285 260 3 4 T3016	<b>2928503</b>	29285 260 3 4 T3016	<b>2928503</b>
Midlum 19,5" Meritor C-Lisa	2000-	29100 252 0 4 T3016	<b>2910004</b>	29100 252 0 4 T3016	<b>2910004</b>
Midlum 19,5" Wabco PAN 19-2	2000-	29142 298 1 4 T3016	<b>2914204</b>	29142 298 1 4 T3016	<b>2914204</b>
New Midlum 7,5 t	2006-07/2014	29088 260 3 4 T3032	<b>2908820</b>	29088 260 3 4 T3032	<b>2908820</b>
New Midlum 7,5 t	08/2014-	29285 260 3 4 T3032	<b>2928501</b>	29285 260 3 4 T3032	<b>2928501</b>
New Midlum 10 t	2006-	29181 300 1 4 T3032	<b>2918101</b>	29181 300 1 4 T3032	<b>2918101</b>
New Midlum 12 -18 t		29173 292 2 4 T3032	<b>2917301</b>	29173 292 2 4 T3032	<b>2917301</b>
New Midlum; Heavy Duty Application/ Schwerlastanwendung		29272 292 2 4 T7600	<b>2927201</b>	29272 292 2 4 T7600	<b>2927201</b>
R-Serie	1993-1996	29030 282 1 4 T3016	<b>2903007</b>		
Magnum/Premium	1996-2000	29090 282 1 4 T3016	<b>2909006</b>		
Magnum/Premium Meritor D 3	2000-	29030 282 1 4 T3016	<b>2903007</b>		
Magnum/Premium Meritor D-Elsa 2	2000-	29131 302 1 4 T3016	<b>2913105</b>		
Magnum E.TECH	2000-	29131 302 1 4 T3016	<b>2913105</b>	29131 302 1 4 T3016	<b>2913105</b>
New Magnum		29174 292 2 4 T3032	<b>2917401</b>	29174 292 2 4 T3032	<b>2917401</b>
New Magnum; Heavy Duty Application/ Schwerlastanwendung		29273 292 2 4 T7600	<b>2927301</b>	29273 292 2 4 T7600	<b>2927301</b>
New Magnum, additional axle/Zusatzachse	-12/2011			29177 292 2 4 T3032	<b>2917701</b>
New Magnum, additional axle/Zusatzachse	01/2012-			29177 292 2 4 T7600	<b>2917705</b>
New Premium		29174 292 2 4 T3032	<b>2917401</b>	29174 292 2 4 T3032	<b>2917401</b>
New Premium; Heavy Duty Application/ Schwerlastanwendung		29273 292 2 4 T7600	<b>2927301</b>	29273 292 2 4 T7600	<b>2927301</b>
New Premium, additional axle/Zusatzachse	-12/2011			29177 292 2 4 T3032	<b>2917701</b>
New Premium, additional axle/Zusatzachse	01/2012-			29177 292 2 4 T7600	<b>2917705</b>
414x150		19934 1850 0 8 T0115	<b>1993409</b>	19934 1850 0 8 T0115	<b>1993409</b>

Model/Modell	Year/ Baujahr	Front Axle/ Vorderachse	Art-Nr.	Rear Axle/ Hinterachse	Art-Nr.
414x220				19187 1850 0 8 T0115	<b>1918709</b>
410x173,8				19090 1800 0 8 D7115/G115	<b>1909007</b>
410x198,6				19071 1800 0 8 D7115/G115	<b>1907109</b>
410x223,6				19068 1800 0 8 D7115/G115	<b>1906810</b>
414x175				19935 1850 0 8 T0115	<b>1993509</b>
<b>Renault (R.V.I.) (Bus)</b>					
Iliade	1999-2000	29030 282 1 4 T3016	<b>2903007</b>	29030 282 1 4 T3016	<b>2903007</b>
Iliade	2000-	29131 302 1 4 T3016	<b>2913105</b>	29131 302 1 4 T3016	<b>2913105</b>
414x220				19187 1850 0 8 D 7113	<b>1918712</b>
<b>Scania (Truck/LKW)</b>					
Series/Serie 4		29201 300 4 4 T3050	<b>2920101</b>	29201 300 4 4 T3050	<b>2920101</b>
Series/Serie P,G,R,T		29201 300 4 4 T3050	<b>2920101</b>	29201 300 4 4 T3050	<b>2920101</b>
Series/Serie 4	-12/2015	29278 300 1 4 T3050	<b>2927801</b>	29278 300 1 4 T3050	<b>2927801</b>
Series/Serie P,G,R,T	-12/2015	29278 300 1 4 T3050	<b>2927801</b>	29278 300 1 4 T3050	<b>2927801</b>
Series/Serie 4	-01/2016-	29331 300 1 4 T3050	<b>2933101</b>	29331 300 1 4 T3050	<b>2933101</b>
Series/Serie P,G,R,T	-01/2016-	29331 300 1 4 T3050	<b>2933101</b>	29331 300 1 4 T3050	<b>2933101</b>
412x127				17991 1900 0 4 D7115/G115	<b>1799102</b>
413x127				17161 1900 0 8 D7115/G115	<b>1716104</b>
413x178				19075 1900 0 8 D7115/G115	<b>1907502</b>
413x178				19931 1900 0 4 D7115/G115	<b>1993104</b>
413x203				19393 1900 0 8 D7115/G115	<b>1939308</b>
413x203				19932 1900 0 4 D7115/G115	<b>1993204</b>
413x254				19647 1900 0 8 D7115/G115	<b>1964702</b>
413x254				19933 1900 0 4 D7115/G115	<b>1993304</b>
<b>Scania (Bus)</b>					
Knorr SB 7000		29059 300 4 4 T7400	<b>2905902</b>	29059 300 4 4 T7400	<b>2905902</b>
Knorr SB 7000	-12/2015	29278 300 1 4 T7400	<b>2927802</b>	29278 300 1 4 T7400	<b>2927802</b>
Knorr SB 7000	-01/2016-	29331 300 1 4 T7400	<b>2933102</b>	29331 300 1 4 T7400	<b>2933102</b>
<b>Solaris (Bus)</b>					
Urbino 10, 12, 15, 18		29087 300 1 4 T7400	<b>2908711</b>	29087 300 1 4 T7400	<b>2908711</b>
Hybrid 18		29087 300 1 4 T7400	<b>2908711</b>	29087 300 1 4 T7400	<b>2908711</b>
Vacanza 12, 13		29087 300 1 4 T7400	<b>2908711</b>	29087 300 1 4 T7400	<b>2908711</b>
Trollino 12, 15, 18		29087 300 1 4 T7400	<b>2908711</b>	29087 300 1 4 T7400	<b>2908711</b>
Urbino 10, 12, 15, 18		29278 300 1 4 T7400	<b>2927802</b>	29278 300 1 4 T7400	<b>2927802</b>
Hybrid 18		29278 300 1 4 T7400	<b>2927802</b>	29278 300 1 4 T7400	<b>2927802</b>
Vacanza 12, 13		29278 300 1 4 T7400	<b>2927802</b>	29278 300 1 4 T7400	<b>2927802</b>
Trollino 12, 15, 18		29278 300 1 4 T7400	<b>2927802</b>	29278 300 1 4 T7400	<b>2927802</b>
<b>Van Hool (Bus)</b>					
coporation bus/ Stadtbus mit MAN-Chassis		29113 282 1 4 T3023	<b>2911307</b>		
intercity bus/ Überlandbus mit MAN-Chassis		29113 282 1 4 T3010	<b>2911303</b>		
<b>Volkswagen</b>					
Transporter/Kombi/Bus (T4)	09/90-	23034 186 0 5 T490			
LT 28, 31, 35 (Einzelbereifung)				13193 0600 1 5 T066	<b>1319302</b>
LT 46	04/96-	29153 200 1 4 T3011	<b>2915302</b>	29153 200 1 4 T3011	<b>2915302</b>
Crafter > 3,5 t	2006-	29192 209 4 4 T3036	<b>2919202</b>		
Crafter 5,0 t	2008-	29200 209 2 4 T3036	<b>2920002</b>	29217 206 1 5 T3038	<b>2921702</b>

Model/Modell	Year/ Baujahr	Front Axle/ Vorderachse	Art-Nr.	Rear Axle/ Hinterachse	Art-Nr.
<b>Volvo (Truck/LKW)</b>					
FL 611, 612	2001-	29136 292 1 4 D 7500	<b>2913606</b>	29136 292 1 4 D 7500	<b>2913606</b>
FL 613, 614, 615	2001-	29137 292 1 4 T3034	<b>2913706</b>	29137 292 1 4 T3034	<b>2913706</b>
FL 618	-12/2012	29125 292 1 4 D 7500	<b>2912503</b>	29125 292 1 4 D 7500	<b>2912503</b>
FL 618	01/2013-	29277 292 1 4 D 7500	<b>2927701</b>	29277 292 1 4 D 7500	<b>2927701</b>
FL II		29173 292 2 4 T3032	<b>2917301</b>	29173 292 2 4 T3032	<b>2917301</b>
FL II; Heavy Duty Application/ Schwerlastanwendung		29272 292 2 4 T7600	<b>2927201</b>	29272 292 2 4 T7600	<b>2927201</b>
FE		29174 292 2 4 T3032	<b>2917401</b>	29174 292 2 4 T3032	<b>2917401</b>
FE II; Heavy Duty Application/ Schwerlastanwendung		29273 292 2 4 T7600	<b>2927301</b>	29273 292 2 4 T7600	<b>2927301</b>
FM-Serie	-12/2012	29125 292 1 4 D 7500	<b>2912503</b>	29125 292 1 4 D 7500	<b>2912503</b>
FM-Serie	01/2013-	29277 292 1 4 D 7500	<b>2927701</b>	29277 292 1 4 D 7500	<b>2927701</b>
FH-Serie	-12/2012	29125 292 1 4 D 7500	<b>2912503</b>	29125 292 1 4 D 7500	<b>2912503</b>
FH-Serie	01/2013-	29277 292 1 4 D 7500	<b>2927701</b>	29277 292 1 4 D 7500	<b>2927701</b>
FH-Serie, lifting Axle/Liftachse	2001-			29151 292 1 4 T3034	<b>2915102</b>
Mack Truck (USA)		29291 292 1 4 T3032/ T7070	<b>2929101</b>	29291 292 1 4 T3032/T7070	<b>2929101</b>
New/Neue FM Series/Serie		29174 292 2 4 T3032	<b>2917401</b>	29174 292 2 4 T3032	<b>2917401</b>
New/Neue FH Series/Serie; Heavy Duty Application/Schwerlastanwendung		29273 292 2 4 T7600	<b>2927301</b>	29273 292 2 4 T7600	<b>2927301</b>
New/Neue FH Series/Serie		29174 292 2 4 T3032	<b>2917401</b>	29174 292 2 4 T3032	<b>2917401</b>
New/Neue FH Series/Serie; Heavy Duty Application/Schwerlastanwendung		29273 292 2 4 T7600	<b>2927301</b>	29273 292 2 4 T7600	<b>2927301</b>
New/Neue FH Series/Serie, additional axle/Zusatzachse	-12/2011			29177 292 2 4 T3032	<b>2917701</b>
New/Neue FH Series/Serie, additional axle/Zusatzachse	01/2012-			29177 292 2 4 T7600	<b>2917705</b>
360x162,5				19640 0970 0 5 T026	<b>1964001</b>
410x125				17992 1840 0 5 G115/D7115	<b>1799202</b>
410x173,8				19090 1800 0 8 G115/D7115	<b>1909007</b>
410x198,6				19071 1800 0 8 G115/T026	<b>1907109</b>
410x223,6				19068 1800 0 8 G115/T026	<b>1906810</b>
410x150				19941 1840 0 8 D7117	
<b>Volvo (Bus)</b>					
360x170		19640 0970 0 5 T026	<b>1964001</b>	19640 0970 0 5 T026	<b>1964001</b>
Meritor D-Duco		29125 292 1 4 D 7500	<b>2912503</b>	29125 292 1 4 D 7500	<b>2912503</b>
Meritor D-Duco	10/2012	29277 292 1 4 D 7500	<b>2927701</b>	29277 292 1 4 D 7500	<b>2927701</b>
Meritor D-ELSA-2		29131 302 1 4 D 7500	<b>2913111</b>	29131 302 1 4 D 7500	<b>2913111</b>
Meritor D-Lisa		29090 282 1 4 T3034	<b>2909009</b>		
<b>YUTONG (Bus) (China)</b>					
YOUFIN DR01 22.5"		29275 300 0 4 T8050		29275 300 0 4 T8050	
Public/City Bus		29278 300 1 4 T7400	<b>2927802</b>	29278 300 1 4 T7400	<b>2927802</b>
Public/City Bus		29059 300 1 4 T7400	<b>2905902</b>	29059 300 1 4 T7400	<b>2905902</b>
Public/City Bus		29331 300 1 4 T7400	<b>2933102</b>	29331 300 1 4 T7400	<b>2933102</b>
410x220		19138 1680 0 8 T8600			
410x220				19139 1680 0 8 T8600	





## AXLE MANUFACTURER/ACHSENHERSTELLER

AXLE/ACHSE	Rear Axle/Hinterachse	Art-Nr.
<b>Baoben</b>		
410x163	19494 1700 0 8 T012	1949407
410x183	19495 1700 0 8 T012	1949506
<b>Baohua Axle/KIC (China)</b>		
420x178	19036 1850 0 5 T013	
420x218	19126 1850 0 5 T013	
420x218	19369 1850 0 5 T013	
<b>BPW</b>		
300x60	15004 0500 0 4 T053	1500401
300x100	17347 1800 0 5 T090	1734703
300x150	19573 1800 0 8 T090	1957306
300x200	19574 1800 0 8 T090	1957428
350x60	15044 0600 0 4 T053	1504401
360x160	19952 1800 0 5 T090	1995201
360x200	19902 1800 0 5 T090	1990210
400x80	15247 0800 0 4 T053	1524701
400x120	17115 1000 0 8 T053	1711501
410x120	17405 1200 0 8 T090	1740501
410x180	19081 1200 0 8 T090	1908101
420x120	17377 1800 0 8 T090	1737707
420x160	19200 1800 0 8 T090	1920005
420x180	19032 1800 0 8 T090	1903234
420x180 Key Lining/Schlüsselbelag	19191 1800 0 8 T090	1919101
420x200	19094 1800 0 8 T090	1909442
420x200 Key Lining/Schlüsselbelag	19192 1800 0 8 T090	1919201
420x220	19591 1800 0 8 T090	1959111
<b>FUWA (China)</b>		
420x178	19636 1850 0 5 T013/T090	1963601
<b>GFA</b>		
300x60	15153 1600 0 8 T0127	1515301
300x80	15077 1600 0 8 T0127	1507701
300x100	17314 1600 0 8 T0127	1713401
<b>Kässbohrer (Evobus)</b>		
300x200	19568 1800 0 8 T013	1956801
400x200	19166 1946 0 5 T013	1916602

AXLE/ACHSE	Rear Axle/Hinterachse	Art-Nr.
<b>Knott</b>		
410x220	19712 1550 0 5 T011	1971201
485	29626 258 0 4 T457	2962603
<b>ROR</b>		
D-Elsa-2	29131 302 1 4 T3016	2913105
<b>SAF</b>		
300x150	19517 1540 0 5 T0100	1951705
420x180	19283 2050 0 5 T0100	1928311
420x200	19477 2050 0 5 T0100	1947708
<b>Warstein</b>		
300x150	19596 1800 0 8 T013	1959601
300x200	19568 1800 0 8 T013	1956801
<b>Valx</b>		
360x200	19902 1800 0 8 T0124	1990218
420x180	19636 1850 0 5 T0124	1963603
<b>ZF</b>		
Knorr SB7000	29087 300 1 4 T7400	2908711
Knorr SB7000	29278 300 1 4 T7400	2927802

## BRAKE MANUFACTURER/BREMSENHERSTELLER

AXLE/ACHSE	Rear Axle/Hinterachse	Art-Nr.
<b>BPW</b>		
SB 3745	29306 300 1 4 T3030	2930601
SB 4345	29307 300 1 4 T3030	2930701
SB 4309	29308 300 1 4 T3030	2930801
TSB 3709	29227 300 1 4 8200	2922701
TSB 4309	29228 300 1 4 8200	2922801
<b>Bosch</b>		
ZOH 2x48	29217 206 1 5 T3038	2921702
<b>Brembo</b>		
PF 2.48	29192 209 1 4 T3036	2919202
PF 2.52	29200 209 2 4 T3036	2920002
<b>Haldex</b>		
DB 19	29181 300 1 4 T3032	2918101
<b>Knorr-Bremse</b>		
SB 5000 (MB) -12/2013	29148 340 2 5 T3016	2914812
SB 5000 (MB) 01/2014-	29183 340 2 5 T3016	2918302
SB 5000 (MAN) -06/2014	29148 340 2 5 T3029	2914811
SB 5000 (MAN) 07/2014-	29183 340 2 5 T3029	2918301
SB 5000 (Kamaz) -12/2013	29148 340 2 5 T3030	2914815
SB 5000 (Kamaz) 01/2014-	29183 340 2 5 T3030	2918303
SK 6000 (BPW)	29306 300 1 4 T3030	2930601
SB 6000 (Iveco)	29095 300 3 4 T3030	2909522
SB 6000 (Iveco)	29320 300 1 4 T3030	2932005



AXLE/ACHSE	Rear Axle/Hinterachse	Art-Nr.
SB 6000 (MAN)	29095 300 3 4 T3010	2909507
SB 6000 (MAN)	29320 300 1 4 T3010	2932001
SB 6000 (MB)	29095 300 1 4 T3016	2909504
SB 6000 (MB)	29361 300 3 4 T3016	2936101
SB 6000 (MB)	29095 300 3 4 T7400	2909518
SB 6000 (MB)	29361 300 1 4 T7400	2936102
SN 7000 (BPW)	29307 300 1 4 T3030	2930701
SB 7000 (Evobus, MB, Solaris, Prevost)	29087 300 1 4 T7400	2908711
SB 7000 (Evobus, MB, Solaris, Prevost)	29278 300 1 4 T7400	2927802
SB 7000 (DAF) -10/2011	29202 300 1 4 T7400	2920201
SB 7000 (DAF) ProTec S 10/2011-	29278 300 1 4 T7400	2927802
SB 7000 (Scania)	29201 300 4 4 T3050	2920101
SB 7000 (Scania Bus)	29059 300 4 4 T7400	2905902
SB 7000 (Scania)	29278 300 1 4 T3050	2927801
SB 7000 (Scania Bus)	29278 300 1 4 T7400	2927802
SB 7000 (Scania)	29331 300 1 4 T3050	2933101
SB 7000 (Scania Bus)	29331 300 1 4 T7400	2933102
SK 7000 (BPW)	29308 300 1 4 T3030	2930801
<b>Meritor</b>		
C-Lisa (Renault Truck)	29100 252 0 4 T3016	2910004
D 3 (Renault Truck)	29030 282 1 4 T3016	2903007
D 3 (Kässbohrer)	29030 282 1 4 T7400	2903009
D-Elsa-1 (MAN)	29113 282 1 4 T3010	2911303
D-Elsa-1 (MAN)	29113 282 1 4 T3023	2911307
D-Elsa-2 (Irisbus)	29131 302 1 4 T3016	2913105
D-Elsa-2 (MAN)	29131 302 1 4 T3010	2913103
D-Elsa-2 (Renault Truck)	29131 302 1 4 T3016	2913105
D-Elsa-2 (ROR)	29131 302 1 4 T3016	2913105
D-Lisa (Renault Truck)	29090 282 1 4 T3016	2909006
B-Duco (Volvo)	29136 292 1 4 D 7500	2913606
C-Duco (Volvo)	29137 292 1 4 T3034	2913706
D-Duco (Volvo) -12/2012	29125 292 1 4 D 7500	2912503
D-Duco (Volvo) 01/2013-	29277 292 1 4 D 7500	2927701
DLE-Duco (Volvo)	29151 292 1 4 T3034	2915102
Elsa 225-1 (Renault Truck, Volvo)	29173 292 2 4 T3032	2917301
Elsa 225-1 (Renault Truck, Volvo); Heavy Duty Application/Schwerlastanwendung	29272 292 2 4 T7600	2927201
Elsa 225-3 (Renault Truck, Volvo, Ford)	29174 292 2 4 T3032	2917401
Elsa 225-3 (Renault Truck, Volvo); Heavy Duty Application/Schwerlastanwendung	29273 292 2 4 T7600	2927301



AXLE/ACHSE	Rear Axle/Hinterachse	Art-Nr.
Elsa VGT 195 (RenaultTruck, Volvo) -12/2011	29177 292 2 4 T3032	2917701
Elsa VGT 195 (RenaultTruck, Volvo) -01/2012	29177 292 2 4 T7600	2917705
EX 225-H3 (MCI Bus, Optare Bus)	29187 310 1 4 T7400	2918701
EX225-434L MACK Truck (USA)	29291 300 1 4 T3032/T7070	2929101
<b>Teves</b>		
SS60	29581 150 0 4 T205	2958104
4S57	29764 203 0 5 T527	2976402
<b>Wabco</b>		
485	29626 258 0 4 T457	2962603
V 1000 (MAN)	29055 220 0 4 T3010	2905503
V 1300 ( MB Unimog )	29134 230 1 4 T202	2913401
PAN 17 (DAF, MAN) -07/2014	29088 260 3 4 T3010	2908807
PAN 17 (DAF, MAN) 08/2014-	29285 260 3 4 T3010	2928502
PAN 17 (Optare) -07/2014	29088 260 3 4 T7400	2908824
PAN 17 (Optare) 08/2014-	29285 260 3 4 T7400	2928504
PAN 17 (Renault Truck) -07/2014	29088 260 3 4 T3016	2908823
PAN 17 (Renault Truck) 08/2014-	29285 260 3 4 T3016	2928503
PAN 17 (Renault Truck) -07/2014	29088 260 3 4 T3032	2908820
PAN 17 (Renault Truck) 08/2014-	29285 260 3 4 T3032	2928501
PAN 17 (MAN)	29091 270 3 4 T3010 (Oversize/Übermaß 29088)	2909104
PAN 17 (South America/Süd Amerika)	29117 260 0 4 T3010	2911701
PAN 19-1 (DAF) -08/2014	29159 298 2 4 T3010	2915901
PAN 19-1 (DAF) 09/2014-	29313 298 2 4 T3010	2931301
PAN 19-1 (Dennis) -08/2014	29159 298 2 4 T7400	2915907
PAN 19-1 (Dennis) 09/2014-	29313 298 2 4 T7400	2931303
PAN 19-2 (DAF)	29141 298 1 4 T3010	2914106
PAN 19-2 (Renault Truck)	29142 298 1 4 T3016	2914204
MAXX 19 (Volvo, Renault Truck)	29284 300 1 4 T3032	2928401



**TEXTAR**<sup>®</sup>  
BRAKE TECHNOLOGY



## PERFORMANCE AND SAFETY ASSURED.

Choosing the right friction solution needn't be a challenge. Be it for truck, trailer, bus or coach, Textar offers disc brake pads and drum brake linings for 99% of all European commercial vehicles. And with Textar, every product comes with the assurance of total quality, maximum safety and ultimate reliability.

As the world's leading brand for commercial vehicle brake friction and the leading supplier of brake pads and linings to both the O.E. sector and the aftermarket, Textar offers the performance and safety that only the original can guarantee. That's why 70% of all commercial vehicles in Europe are fitted with Textar brake linings as standard. Driving innovation: Textar's new lightweight disc brake pads combine safety with sustainability. Their ultra-strong, yet lightweight design contributes to lowering fuel consumption and emissions, so they're better for you and for the environment too.

## SOVIEL IST SICHER!

Wenn es um die perfekte Lösung für Bremsbeläge geht, dann führt kein Weg an Textar vorbei. Egal, ob für LKW, Anhänger, Stadt- oder Reisebus – bei uns finden Sie Bremslösungen für 99% aller europäischen Nutzfahrzeuge. Als weltweit führende Marke für Nutzfahrzeug-Bremsbeläge und marktführender Lieferant für Scheiben- und Trommelbremsbeläge in der Erstausrüstung und für den Ersatzteilmarkt bieten wir die Sicherheit, die nur das Original gewährleisten kann. Nicht ohne Grund bremsen 70% aller mit Trommelbremsbelägen ausgerüsteten Nutzfahrzeuge in Europa mit Textar.

Mit maximaler Innovationskraft: So bieten wir als erste Marke Leichtbau-Scheibenbremsbeläge im Ersatzteilmarkt, die nicht nur sicher und komfortabel, sondern auch effizienter und umweltschonender sind.

TMD Friction Services GmbH  
Schlebuscher Str. 99  
51381 Leverkusen/Germany  
E-mail: [info@textar.com](mailto:info@textar.com)



**TMD FRICTION**  
A NISSHINBO GROUP COMPANY